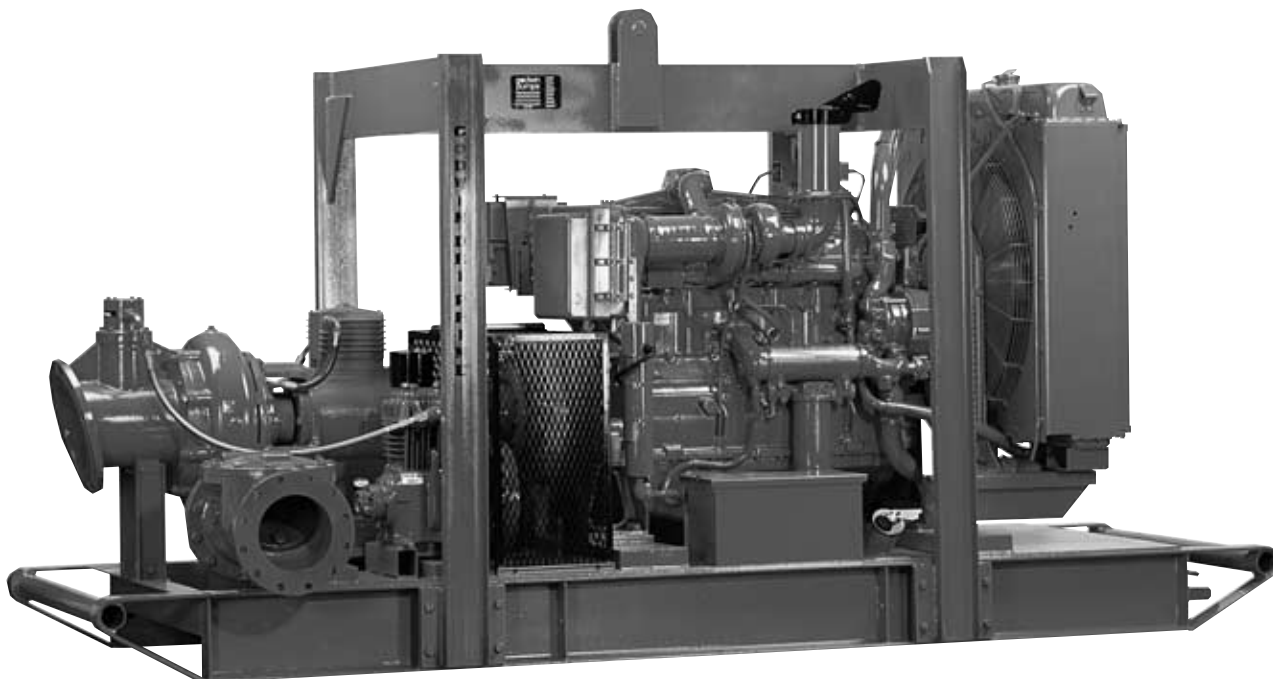


HL8M Dri-Prime® Pumps

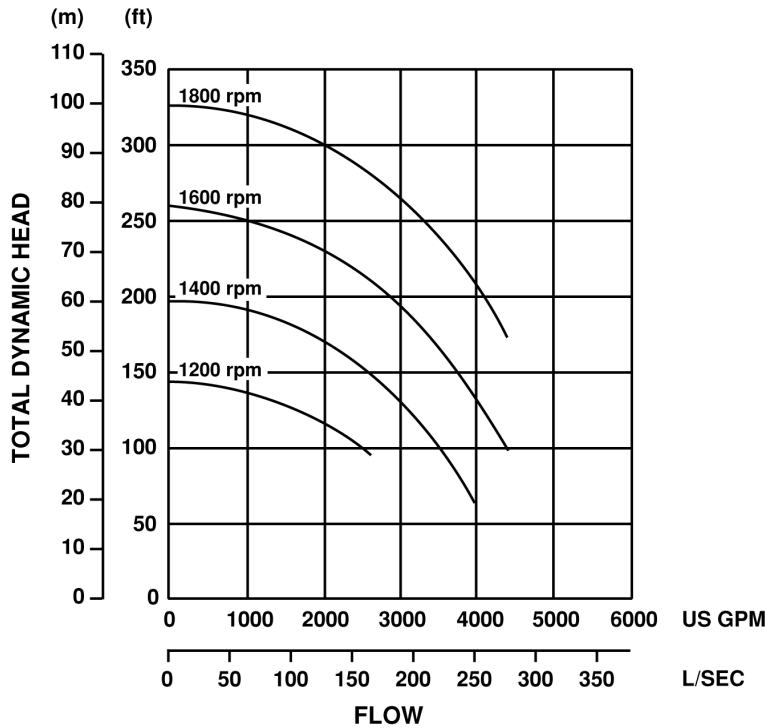


The Godwin Dri-Prime 10" x 8" (250mm x 200mm) HL8M is a heavy duty, fully automatic self-priming pump specifically offered for pumping under discharge pressure conditions or high discharge lift applications. The HL8M offers flow rates up to 4,400 gpm (277 l/sec), total dynamic heads up to 325' (99 meters), and solids handling up to 3" (75mm) in diameter. Like all Godwin pumps, the HL8M includes the Dri-Prime air ejector priming system for fully automatic priming up to 28' of static suction lift.

Features

- Fully automatic priming from dry to 28' (8.5 meters) of suction lift. Maximum heads to 325' (99 meters). Maximum flows to 4,400 gpm (277 l/sec).
- Handles sludges and solids-laden liquids with solids up to 3" (75mm) in diameter.
- Continuously operated venturi air ejector priming system operated by belt-driven air compressor requiring no form of periodic adjustment or operator intervention.
- Dual, high pressure, dry running solid silicon carbide inboard and carbon/stainless outboard mechanical seal with self-contained water/glycol circulating thermo-siphoning cooling.
- Mounted to a structural steel skid with integral 140/250 gal. (530/946 liter) fuel tank and lifting bail.
- Standard engine — Caterpillar 3406C diesel. Other engines available. Electric drive version also available.

HL8M Performance Curve



HL8M Performance Table

Diesel Set — Caterpillar 3406C, 420 hp @ 1800 rpm
 Impeller Diameter: 16-15/16" (430 mm)

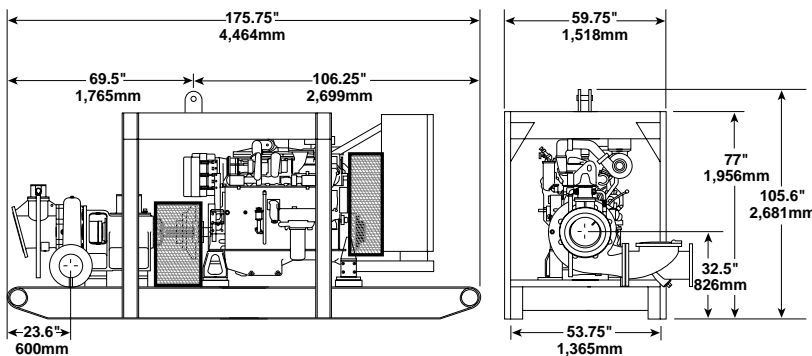
Total Delivery Head — Feet

Total Suction Head — Feet	150	200	250	300
	Output — GPM			
10	4400	4150	3450	2600
15	4250	4000	3400	2570
20	3900	3800	3200	2300
25	3400	3250	2800	2150

Performance data listed in table and curves based on water test at sea level and 68° F (20° C). Maximum flows may require larger diameter pipes.

Dimensions

HL8M — Caterpillar 3406C, Skid Base
 Weight: 10,500 lbs. (4,273 kg.)



Specifications

- Maximum Operating Speed:** 1800 rpm
- Maximum Operating Temperature:** 194° F (90° C)
- Maximum Working Pressure:** 141 psi
- Maximum Suction Pressure:** 90 psi
- Maximum Casing Pressure:** 240 psi
- Fuel Tank Capacity:** 140/250 gal. (530/946 liter)
- Fuel Consumption:** 19.7 gph (74.5 lph)
- Pipe Connections:** Suction: 10" (250mm) ASA 150
Discharge: 8" (200mm) ASA 150
- Solids Handling:** 3" (75mm) dia.

Materials

Pump Casing, Bearing Casing, & Non Return Valve:

Close Grained Cast Iron

Impeller:

Cast Chromium Steel, hardened to minimum Brinell 293 HB

Wearplates:

Nickel-Chrome Cast Iron, replaceable

Mechanical Seal:

Solid Silicon Carbide faced, dry running, dual high pressure mechanical seal cooled by glycol/water mix from integral tank



One Floodgate Road, Bridgeport, NJ 08014, USA
 (856) 467-3636 • Fax: (856) 467-4841

Quenington, Cirencester, Glos., GL7 5BX, UK
 +44 (0)1285-750271 • Fax: +44 (0)1285-750352

E-mail: sales@godwinpumps.com
 www.godwinpumps.com

BRANCH LOCATIONS:

- Norwich, CT • Buffalo, NY • Chicago, IL
- Washington, DC • Richmond, VA • Virginia Beach, VA • Charleston, WV • N. Charleston, SC
- Raleigh, NC • Atlanta, GA • Houston, TX
- San Antonio, TX • Helena, MT • Los Angeles, CA

Dri-Prime® is a registered trademark of Godwin Pumps of America, Inc. Specifications and illustrations are subject to revision without notice.
 © Copyright 2001 Godwin Pumps of America, Inc. All rights reserved.